

ARTICLE

DOI: 10.1038/s41467-017-01440-4

OPEN

Search for domain wall dark matter with atomic clocks on board global positioning system satellites

Benjamin M. Roberts¹, Geoffrey Blewitt^{1,2}, Conner Dailey¹, Mac Murphy¹, Maxim Pospelov^{3,4}, Alex Rollings¹, Jeff Sherman⁵, Wyatt Williams¹ & Andrei Derevianko¹

Cosmological observations indicate that dark matter makes up 85% of all matter in the universe yet its microscopic composition remains a mystery. Dark matter could arise from ultralight quantum fields that form macroscopic objects. Here we use the global positioning system as a $\sim 50,000$ km aperture dark matter detector to search for such objects in the form of domain walls. Global positioning system navigation relies on precision timing signals furnished by atomic clocks. As the Earth moves through the galactic dark matter halo, interactions with domain walls could cause a sequence of atomic clock perturbations that propagate through the satellite constellation at galactic velocities ~ 300 km s⁻¹. Mining 16 years of archival data, we find no evidence for domain walls at our current sensitivity level. This improves the limits on certain quadratic scalar couplings of domain wall dark matter to standard model particles by several orders of magnitude.

¹Department of Physics, University of Nevada, Reno, NV 89557, USA. ²Nevada Geodetic Laboratory, Nevada Bureau of Mines and Geology, University of Nevada, Reno, NV 89557, USA. ³Department of Physics and Astronomy, University of Victoria, Victoria, BC, Canada V8P 1A1. ⁴Perimeter Institute for Theoretical Physics, Waterloo, ON, Canada N2J 2W9. ⁵National Institute of Standards and Technology, Boulder, CO 80305, USA. Correspondence and requests for materials should be addressed to A.D. (email: andrei@unr.edu)

Despite the overwhelming cosmological evidence for the existence of dark matter (DM), there is as of yet no definitive evidence for DM in terrestrial experiments. Multiple cosmological observations suggest that ordinary matter makes up only about 15% of the total matter in the universe, with the remaining portion composed of DM¹. All the evidence for DM (e.g., galactic rotation curves, gravitational lensing, cosmic microwave background) comes from galactic or larger scale observations through the gravitational pull of DM on ordinary matter¹. Extrapolation from the galactic to laboratory scales presents a challenge because of the unknown nature of DM constituents. Various theories postulate additional non-gravitational interactions between standard model (SM) particles and DM. Ambitious programs in particle physics have mostly focused on (so far unsuccessful) searches for weakly interacting massive particle (WIMP) DM candidates with $10\text{--}10^3 \text{ GeV } c^{-2}$ masses (c is the speed of light) through their energy deposition in particle detectors². The null results of the WIMP searches have partially motivated an increased interest in alternative DM candidates, such as ultralight fields. These fields, in contrast to particle candidates, act as coherent entities on the scale of an individual detector.

Here we focus on ultralight fields that may cause apparent variations in the fundamental constants of nature. Such variations in turn lead to shifts in atomic energy levels, which may be measurable by monitoring atomic frequencies^{3–5}. Such monitoring is performed naturally in atomic clocks, which tell time by locking the frequency of externally generated electromagnetic radiation to atomic frequencies. Here, we analyse time as measured by atomic clocks on board global positioning system (GPS) satellites to search for DM-induced transient variations of fundamental constants⁶. In effect we use the GPS constellation as a $\sim 50,000 \text{ km}$ -aperture DM detector. Our DM search is one example of using GPS for fundamental physics research. Another recent example includes placing limits on gravitational waves⁷.

GPS works by broadcasting microwave signals from nominally 32 satellites in medium-Earth orbit. The signals are driven by an atomic clock (either based on Rb or Cs atoms) on board each satellite. By measuring the carrier phases of these signals with a global network of specialised GPS receivers, the geodetic community can position stations at the 1 mm level for purposes of investigating plate tectonics and geodynamics⁸. As part of this data processing, the time differences between satellite and station clocks are determined with $<0.1 \text{ ns}$ accuracy⁹. Such high-quality timing data for at least the past decade are publicly available and are routinely updated. Here we analyse data from the Jet Propulsion Laboratory¹⁰. A more detailed overview of the GPS architecture and data processing relevant to our search is given in Supplementary Note 1, which includes Supplementary Figs. 1 and 2 and Supplementary Table 1.

The large aperture of the GPS network is well suited to search for macroscopic DM objects, or clumps. Examples of clumpy DM candidates are numerous: topological defects (TDs)^{11,12}, Q-balls^{13–15}, solitons^{16,17}, axion stars^{18,19} and other stable objects formed due to dissipative interactions in the DM sector. For concreteness, we consider specifically TDs. Each TD type (monopoles, strings or domain walls) would exhibit a transient in GPS data with a distinct signature.

Topological defects may be formed during the cooling of the early universe through a spontaneous symmetry breaking phase transition^{11,12}. Technically, this requires the existence of hypothesised self-interacting DM fields, φ . While the exact nature of TDs is model-dependent, the spatial scale of the DM object, d , is generically given by the Compton wavelength of the particles that make up the DM field $d = \hbar/(m_\varphi c)$, where m_φ is the field particle mass, and \hbar is the reduced Planck constant. The fields that are of

interest here are ultralight: for an Earth-sized object the mass scale is $m_\varphi \sim 10^{-14} \text{ eV } c^{-2}$, hence the probed parameter space is complementary to that of WIMP searches², as well as searches for other DM candidates^{20–22}. Searches for TDs have been performed via their gravitational effects, including gravitational lensing^{23–25}. Limits on TDs have been placed by the Planck²⁶ and Background Imaging of Cosmic Extragalactic Polarization 2 (BICEP2)²⁷ collaborations from fluctuations in the cosmic microwave background. So far the existence of TDs is neither confirmed nor ruled out. The past few years have brought several proposals for TD searches via their non-gravitational signatures^{6,28–32}.

Here, we report the results of the search for domain walls, quasi-2D cosmic structures. As a result, we improve the limits on certain quadratic scalar couplings of domain wall DM to standard model particles by several orders of magnitude.

Results

Domain wall theory and expected signal. We focus on the search for domain walls, since they would leave the simplest DM signature in the data. General signature matching for the vast set of GPS data has proven to be computationally expensive and is in progress. While we interpret our results in terms of domain wall DM, we remark that our search applies equally to the situation where walls are closed on themselves, forming a bubble that has transverse size significantly exceeding the terrestrial scale. The galactic structure formation in that case may occur as per conventional cold dark matter theory³³, since from the large distance perspective the bubbles of domain walls behave as point-like objects.

We employ the known properties of the DM halo to model the statistics of encounters of the Earth with TDs. Direct measurements³⁴ of the local dark matter density give $0.3 \pm 0.1 \text{ GeV cm}^{-3}$, and we adopt the value of $\rho_{\text{DM}} \approx 0.4 \text{ GeV cm}^{-3}$ for definitiveness. According to the standard halo model, in the galactic rest frame the velocity distribution of DM objects is isotropic and quasi-Maxwellian, with dispersion³⁵ $v \simeq 290 \text{ km s}^{-1}$ and a cut-off above the galactic escape velocity of $v_{\text{esc}} \simeq 550 \text{ km s}^{-1}$. The Milky Way rotates through the DM halo with the Sun moving at $\sim 220 \text{ km s}^{-1}$ towards the Cygnus constellation. For the goals of this work we can neglect the much smaller orbital velocities of the Earth around the Sun ($\sim 30 \text{ km s}^{-1}$) and GPS satellites around the Earth ($\sim 4 \text{ km s}^{-1}$). Thereby one may think of a TD wind impinging upon the Earth, with typical relative velocities $v_g \sim 300 \text{ km s}^{-1}$. Assuming the standard halo model, the vast majority of events ($\sim 95\%$) would come from the forward-facing hemisphere centred about the direction of the Earth's motion through the galaxy, with typical transit times through the GPS constellation of about 3 min. An example of a domain wall crossing is shown in Fig. 1. Note that we make an additional assumption that the distribution of wall velocities is similar to the standard halo model, which is expected if the gravitational force is the main force governing wall dynamics within the galaxy. However, even if this distribution is somewhat different, the qualitative feature of a TD wind is not expected to change.

A positive DM signal can be visualised as a coordinated propagation of clock glitches at galactic velocities through the GPS constellation, see Fig. 2. The powerful advantage of working with the network is that non-DM clock perturbations do not mimic this signature. The only systematic effect that has propagation velocities comparable to v_g is the solar wind³⁶, an effect that is simple to exclude based on the distinct directionality from the Sun and the fact that the solar wind does not affect the satellites in the Earth's shadow.

As the nature of non-gravitational interactions of DM with ordinary matter is unknown, we take a phenomenological

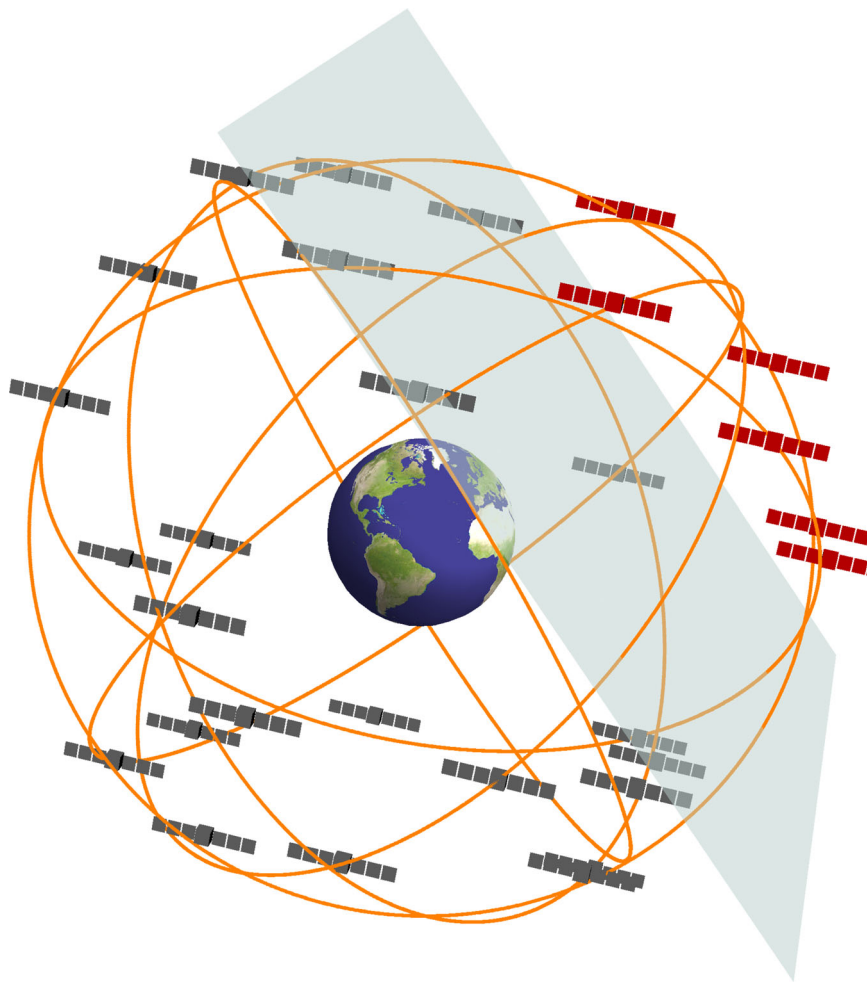


Fig. 1 Domain wall crossing. As a domain wall sweeps through the Global Positioning System constellation at galactic velocities, $v_g \sim 300 \text{ km s}^{-1}$, it perturbs the atomic clocks on board the satellites causing a correlated propagation of glitches through the network. The red satellites have interacted with the domain wall, and exhibit a timing bias compared with the grey satellites. Image generated using Mathematica software⁴⁸

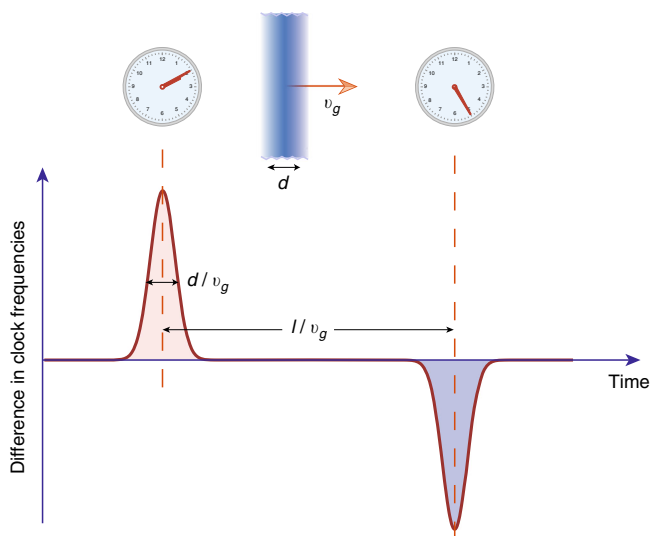


Fig. 2 Time dependence of the dark matter-induced signal. The frequency difference between two identical ideal clocks separated by distance l . The time delay in the signals encodes the kinematics of the dark matter object

approach that respects the Lorentz and local gauge invariances. We consider quadratic scalar interactions between the DM objects and clock atoms that can be parameterised in terms of shifts in the effective values of fundamental constants⁶. The relevant combinations of fundamental constants include $\alpha = e^2/\hbar c \approx 1/137$, the dimensionless electromagnetic fine-structure constant (e is the elementary charge), the ratio m_q/Λ_{QCD} of the light quark mass to the quantum chromodynamics (QCD) energy-scale, and m_e and m_p , the electron and proton masses. With the quadratic scalar coupling, the relative change in the local value for each such fundamental constant is proportional to the square of the DM field

$$\frac{\delta X(r, t)}{X} = \Gamma_X \varphi(r, t)^2, \tag{1}$$

where Γ_X is the coupling constant between dark and ordinary matter, with $X = \alpha, m_e, m_p, m_q/\Lambda_{\text{QCD}}$ (see Supplementary Note 2 for further details).

As the DM field vanishes outside the TD, the apparent variations in the fundamental constants occur only when the TD overlaps with the clock. This temporary shift in the fundamental constants leads in-turn to a transient shift in the atomic energy levels referenced by the clocks, which may be measurable by

monitoring atomic frequencies^{3–5}. The frequency shift can be expressed as

$$\frac{\delta\omega(r, t)}{\omega_c} = \sum_X K_X \frac{\delta X(r, t)}{X}, \quad (2)$$

where ω_c is the unperturbed clock frequency and K_X are known coefficients of sensitivity to effective changes in the constant X for a particular clock transition³⁷. It is worth noting that the values of the sensitivity coefficients K_X depend on experimental realisation. Here we compare spatially separated clocks (to be contrasted with the conventional frequency ratio comparisons^{3–5}), and thus our used values of K_X somewhat differ from other places in the literature³⁷; full details are presented in Supplementary Note 2. For example, for the microwave frequency ⁸⁷Rb clocks on board the GPS satellites, the sensitivity coefficients are

$$\frac{\delta\omega}{\omega_c}(\text{Rb}) = (4.34 \Gamma_\alpha - 0.019 \Gamma_q + \Gamma_{e/p}) \varphi^2 \equiv \Gamma_{\text{eff}}^{(\text{Rb})} \varphi^2, \quad (3)$$

where we have introduced the short-hand notation $\Gamma_q \equiv \Gamma_{m_q/\Lambda_{\text{QCD}}}$ and $\Gamma_{e/p} \equiv 2\Gamma_{m_e} - \Gamma_{m_p}$, and the effective coupling constant $\Gamma_{\text{eff}} \equiv \sum_X K_X \Gamma_X$.

From Eqs. (1) and (2), the extreme TD-induced frequency excursion, $\delta\omega_{\text{ext}}$, is related to the field amplitude φ_{max} inside the defect as $\delta\omega_{\text{ext}} = \Gamma_{\text{eff}} \omega_c \varphi_{\text{max}}^2$. Further, assuming that a particular TD type saturates the DM energy density, we have⁶ $\varphi_{\text{max}}^2 = \hbar c \rho_{\text{DM}} \mathcal{T} v_g d$. Here, \mathcal{T} is the average time between consecutive encounters of the clock with DM objects, which, for a given ρ_{DM} , depends on the energy density inside the defect⁶ $\rho_{\text{inside}} = \rho_{\text{DM}} \mathcal{T} v_g / d$. Thus the expected DM-induced fractional frequency excursion reads

$$\frac{\delta\omega_{\text{ext}}}{\omega_c} = \Gamma_{\text{eff}} \hbar c \rho_{\text{DM}} v_g \mathcal{T} d, \quad (4)$$

which is valid for TDs of any type (monopoles, walls and strings). The frequency excursion is positive for $\Gamma_{\text{eff}} > 0$, and negative for $\Gamma_{\text{eff}} < 0$.

The key qualifier for the preceding Eq. (4) is that one must be able to distinguish between the clock noise and DM-induced frequency excursions. Discriminating between the two sources relies on measuring time delays between DM events at network

nodes. Indeed, if we consider a pair of spatially separated clocks (Fig. 2), the DM-induced frequency shift Eq. (2) translates into a distinct pattern. The velocity of the sweep is encoded in the time delay between two DM-induced spikes and it must lie within the boundaries predicted by the standard halo model. Generalisation to the multi-node network is apparent (see GPS-specific discussion below). The distributed response of the network encodes the spatial structure and kinematics of the DM object, and its coupling to atomic clocks.

Analysis and search. Working with GPS data introduces several peculiarities into the above discussion (see Supplementary Note 1 for details). The most relevant is that the available GPS clock data are clock biases (i.e., time differences between the satellite and reference clocks) $S^{(0)}(t_k)$ sampled at times (epochs) t_k every 30 s. Thus we cannot access the continuously sampled clock frequencies as in Fig. 2. Instead, we formed discretised pseudo-frequencies $S^{(1)}(t_k) \equiv S^{(0)}(t_k) - S^{(0)}(t_{k-1})$. Then the signal is especially simple if the DM object transit time through a given clock, d/v_g , is smaller than the 30-s epoch interval (i.e., thin DM objects with $d \lesssim 10^4$ km, roughly the size of the Earth), since in this case $S^{(1)}$ collapses into a solitary spike at t_k if the DM object was encountered during the (t_{k-1}, t_k) interval. The exact time of interaction within this interval is treated as a free parameter.

One of the expected $S^{(1)}$ signatures for a thin domain wall propagating through the GPS constellation is shown in Fig. 3a. This signature was generated for a domain wall incident with $v = 300 \text{ km s}^{-1}$ from the most probable direction. The derivation of the specific expected domain wall signal is presented in Supplementary Note 3, which includes Supplementary Fig. 3. As the DM response of Rb and Cs satellite clocks can differ due to their distinct effective coupling constants Γ_{eff} , we treated the Cs and Rb satellites as two sub-networks, and performed the analysis separately. Within each sub-network we chose the clock on board the most recently launched satellite as the reference because, as a rule, such clocks are the least noisy among all the clocks in orbit.

To search for domain wall signals, we analysed the $S^{(1)}$ GPS data streams in two stages. At the first stage, we scanned all the data from May 2000 to October 2016 searching for the most general patterns associated with a domain wall crossing, without taking into account the order in which the satellites were swept.

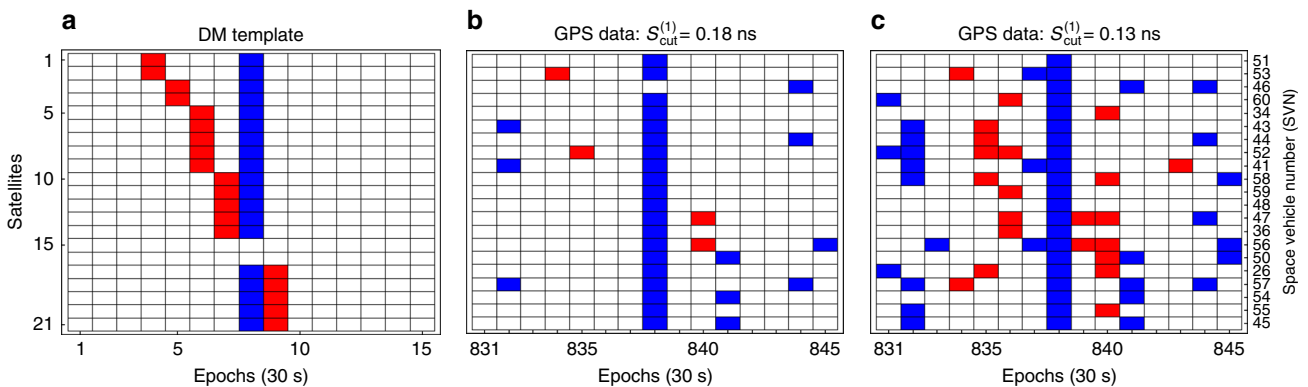


Fig. 3 Correlated dark matter signal across satellite network. **a** One of the expected pseudo-frequency $S^{(1)}$ signatures for a thin domain wall. Red (blue) tiles indicate positive (negative) dark matter-induced frequency excursions, while white tiles mark the absence of the signal (c.f. Fig. 2). In this example, the satellites are listed in the order they were swept (though in general the order depends on the incident direction of the dark matter object and is not known a priori), and $\Gamma_{\text{eff}} > 0$ in Eq. (1). The slope of the red line encodes the incident velocity of the wall. The reference clock was swept within the 30 s leading to epoch 8. Satellites 15 and 16 do not record any frequency excursions, since they are spatially close the reference clock and are swept within the same 30 s period. **b, c** Show $S^{(1)}$ atomic clock data streams for all operational Rb Global Positioning System satellite clocks for 21 May, 2010 for a 15 epoch window. Red tiles show data points with $S^{(1)} > S_{\text{cut}}^{(1)}$, and the blue depict $S^{(1)} < -S_{\text{cut}}^{(1)}$, with $S_{\text{cut}}^{(1)} = 0.18 \text{ ns}$ and 0.13 ns , respectively. At the 0.13 ns level, **c**, this data window would be flagged as a potential event, but not at the 0.18 ns level shown in **b**. In this case, the potential event **c** is excluded because the reference clock experiences a much larger perturbation than the rest of the clock network

We required at least 60% of the clocks to experience a frequency excursion at the same epoch, which would correspond to when the wall crossed the reference clock (vertical blue line in Fig. 3a). This 60% requirement is a conservative choice based on the GPS constellation geometry, and ensures sensitivity to walls with relative speeds of up to $v \lesssim 700 \text{ km s}^{-1}$. Then, we checked if these clocks also exhibit a frequency excursion of similar magnitude (accounting for clock noise) and opposite sign anywhere else within a given time window (red tiles in Fig. 3a). Any epoch for which these criteria were met was counted as a potential event. We considered time windows corresponding to sweep durations through the GPS constellation of up to 15,000 s, which is sufficiently long to ensure sensitivity to walls moving at relative velocities $v \lesssim 4 \text{ km s}^{-1}$ (given that $<0.1\%$ of DM objects are

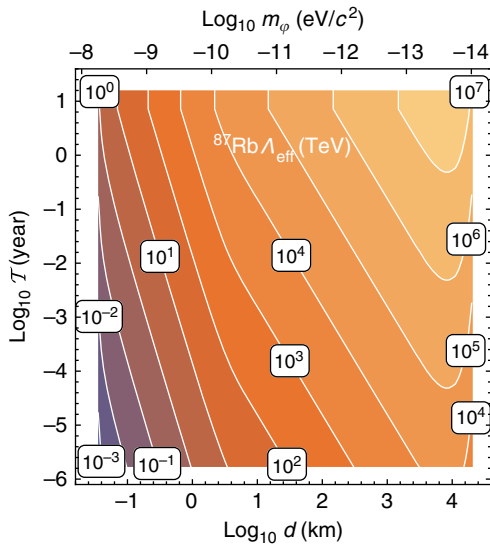


Fig. 4 Results for the effective energy scale. Contour plot showing the 90% confidence level exclusion limits on the effective energy scale Λ_{eff} from the Global Positioning System Rb sub-network as a function of the wall width, d , and average time between encounters with domain walls, T . The secondary horizontal axis shows the dark matter field mass, which for topological defects is related to the width via $m_\phi \sim \hbar/dc$

expected to move with velocities outside of this range). Further details of the employed search technique are presented in the Methods section and Supplementary Note 4.

The tiled representation of the GPS data stream depends on the chosen signal cut-off $S_{\text{cut}}^{(1)}$ (see Fig. 3). We systematically decreased the cut-off values and repeated the above procedure. Above a certain threshold, $S_{\text{thresh}}^{(1)}$, no potential events were seen. This process is demonstrated for a single arbitrarily chosen data window in Fig. 3b, c. The thresholds for the Rb and Cs subnetworks above which no potential events were seen are $S_{\text{thresh}}^{(1)}(\text{Rb}) = 0.48 \text{ ns}$ and $S_{\text{thresh}}^{(1)}(\text{Cs}) = 0.56 \text{ ns}$ for $v \approx 300 \text{ km s}^{-1}$ sweeps.

The second stage of the search involved analysing the potential events in more detail, so that we may elevate their status to candidate events if warranted by the evidence. We examined a few hundred potential events that had $S^{(1)}$ magnitudes just below $S_{\text{thresh}}^{(1)}$, by matching the data streams against the expected patterns; one such example is shown in Fig. 3a. At this second stage, we accounted for the ordering and time at which each satellite clock was affected. The velocity vector and wall orientation were treated as free parameters within the bounds of the standard halo model. As a result of this pattern matching, we found that none of these events were consistent with domain wall DM, thus we have found no candidate events at our current sensitivity. Analysing numerous potential events well below $S_{\text{thresh}}^{(1)}$ has proven to be substantially more computationally demanding, and is beyond the scope of the current work.

Discussion

As we did not find evidence for encounters with domain walls at our current sensitivity, there are two possibilities: either DM of this nature does not exist, or the DM signals are below our sensitivity. In the latter case we may constrain the possible range of the coupling strengths Γ_{eff} . For the discrete pseudo-frequencies, and considering the case of thin domain walls, Eq. (4) becomes

$$|\Gamma_{\text{eff}}| < \frac{S_{\text{thresh}}^{(1)}}{\hbar c \sqrt{\pi} \rho_{\text{DM}} T s(d) d^2}. \quad (5)$$

Our technique is not equally sensitive to all values for the wall widths, d , or average times between collisions, T . This is directly

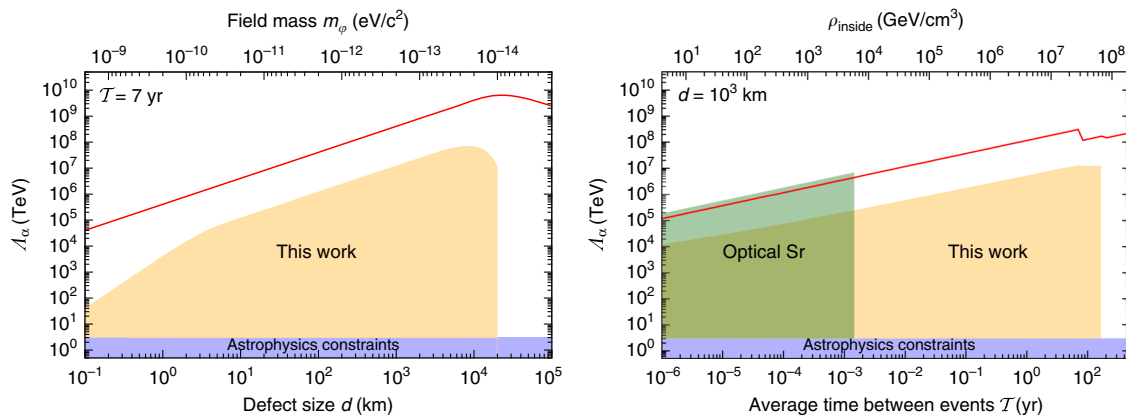


Fig. 5 Constraints on the coupling of dark matter to electromagnetism. Limits (90% confidence level) on the energy scale Λ_α as a function of the wall width d and average time between encounters T . The shaded yellow region shows the Global Positioning System limits from this work (assuming $\Gamma_\alpha \gg \Gamma_{q,e/p}$), the shaded green region shows the limits derived from an optical Sr clock³⁸, and the shaded blue region shows the astrophysical bounds³⁹. The solid red line shows the potential discovery reach using the global network of Global Positioning System microwave atomic clocks. For $T \lesssim 7 \text{ yr}$, the Global Positioning System reach is limited by the modern Rb block IIF satellite clocks⁴⁶ ($\sigma_y(30 \text{ s}) \sim 10^{-11}$), and for $T \lesssim 7 \text{ yr}$, the reach is limited by the older Rb (block IIR, IIA and II) clocks ($\sigma_y(30 \text{ s}) \sim 10^{-10}$). Compared to more accurate optical clocks, microwave clocks provide additional sensitivity to Λ_q and $\Lambda_{e/p}$ (optical clocks only have sensitivity to Λ_α)

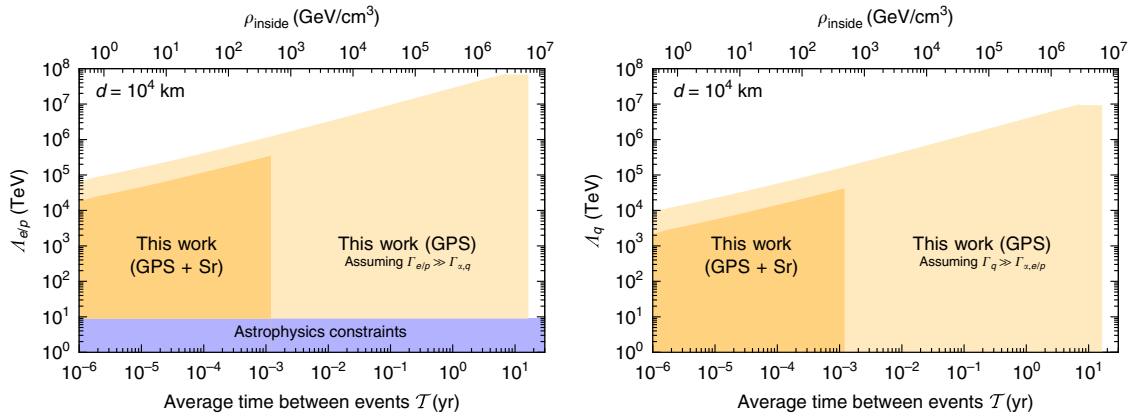


Fig. 6 Constraints on the coupling of dark matter to fermion masses. Limits (90% confidence level) on the energy scales $\Lambda_{e/p}$ and Λ_q as a function of the average time between encounters, T , for constant $d = 10^4$ km. The lighter yellow regions are the limits from the Rb Global Positioning System sub-network in the assumption that the respective couplings dominate the interactions. The darker region combines our limits (from the Rb and Cs sub-networks) with the limits on Λ_α from the Sr optical clock constraints³⁸ to place assumption-free limits on $\Lambda_{e/p}$ and Λ_q . The blue region shows the astrophysical bounds for $\Lambda_{e/p}$; note that Λ_q was previously unconstrained³⁹

taken into account by introducing a sensitivity function, s ($d \in [0,1]$), that is included in Eq. (5) to determine the final limits at the 90% confidence level. For example, the smallest width is determined by the servo-loop time of the GPS clocks, i.e., by how quickly the clock responds to the changes in atomic frequencies. In addition, we are sensitive to events that occur less frequently than once every ~ 150 s (so the expected patterns do not overlap), which places the lower bound on T . Further, we incorporate the expected event statistics into Eq. (5). Details are presented in the Methods section.

Our results are presented in Fig. 4. To be consistent with previous literature^{6,38}, the limits are presented for the effective energy scale $\Lambda_{\text{eff}} \equiv 1/\sqrt{|I_{\text{eff}}|}$. Further, on the assumption that the coupling strength Γ_α dominates over the other couplings in the linear combination in Eq. (3), we place limits on Λ_α . The resulting limits are shown in Fig. 5, together with existing constraints^{38,39}. For certain parameters, our limits exceed the 10^7 TeV level; astrophysical limits³⁹ on Λ_α , which come from stellar and supernova energy-loss observations^{40,41}, have not exceeded ~ 10 TeV.

The derived constraints on Λ_α can be translated into a limit on the transient variation of the fine-structure constant,

$$\frac{\delta\alpha}{\alpha} = \hbar c \rho_{\text{DM}} v_g \frac{T d}{\Lambda_\alpha^2 K_\alpha}, \quad (6)$$

which for $d = 10^4$ km corresponds to $\delta\alpha/\alpha \lesssim 10^{-12}$. Because of the scaling of the constraints on Λ_X , this result is independent of T , and scales inversely with d (within the region of applicability). It is worth contrasting this constraint with results from the searches for slow linear drifts of fundamental constants. For example, the search⁵ resulting in the most stringent limits on long-term drifts of α was carried out over a year and led to $\frac{\delta\alpha}{\alpha} \lesssim 3 \times 10^{-17}$. Such long-term limits apply only for very thick walls of thickness $d \gg v_g \times 1 \text{ yr} \sim 10^{10}$ km, which are outside our present discovery reach.

Further, by combining our results from the Rb and Cs GPS sub-networks with the recent limits on Λ_α from an optical Sr clock³⁸, we also place independent limits on $\Lambda_{e/p}$ and Λ_q ; for details, see Supplementary Note 5. These limits are presented in Fig. 6 as a function of the average time between events. For certain values of the d and T parameters, we improve current bounds on $\Lambda_{e/p}$ by a factor of $\sim 10^5$ and for the first time establish limits on Λ_q .

While we have improved the current constraints on DM-induced transient variation of fundamental constants by several orders of magnitude, it is possible that DM events remain undiscovered in the data noise. Our current threshold $S_{\text{thresh}}^{(1)}$ is larger than the GPS data noise by a factor of $\sim 5\text{--}20$, depending on which clocks/time periods are examined. By applying a more sophisticated statistical approach with greater computing power, we expect to improve our sensitivity by up to two orders of magnitude. Indeed, the sensitivity of the search is statistically determined by the number of clocks in the network, N_{clocks} , and the Allan deviation⁴², $\sigma_y(\tau_0)$, evaluated at the data sampling interval $\tau_0 = 30$ s reads,

$$S^{(1)} \lesssim \frac{\sigma_y(\tau_0) \tau_0}{\sqrt{N_{\text{clocks}}}}, \quad (7)$$

or, combining with Eq. (5),

$$\Lambda_X \lesssim d \sqrt{\frac{\hbar c \rho_{\text{DM}} T K_X \sqrt{N_{\text{clocks}}}}{\sigma_y(\tau_0) \tau_0}}. \quad (8)$$

Note that this estimate differs from a previous estimate⁶, since while arriving at Eq. (7), we assumed a more realistic white frequency noise (instead of white phase noise). The projected discovery reach of GPS data analysis is presented in Fig. 5.

Prospects for the future include incorporating substantially improved clocks on next-generation satellites, increasing the network density with other Global Navigation Satellite Systems, such as European Galileo, Russian Global Navigation Satellite System (GLONASS), and Chinese BeiDou, and including networks of laboratory clocks^{38,43}. Such an expansion can bring the total number of clocks to ~ 100 . Moreover, the GPS search can be extended to other TD types (monopoles and strings), as well as different DM models, such as virialized DM fields^{52,44}.

In summary, by using the GPS as a dark matter detector, we have substantially improved the current limits on DM domain wall induced transient variation of fundamental constants. Our approach relies on mining an extensive set of archival data, using existing infrastructure. As the direct DM searches are widening to include alternative DM candidates, it is anticipated that the mining of time-stamped archival data, especially from laboratory precision measurements, will play an important role in verifying or excluding predictions of various DM models⁴⁵. In the future, our approach can be used for a DM search with nascent networks

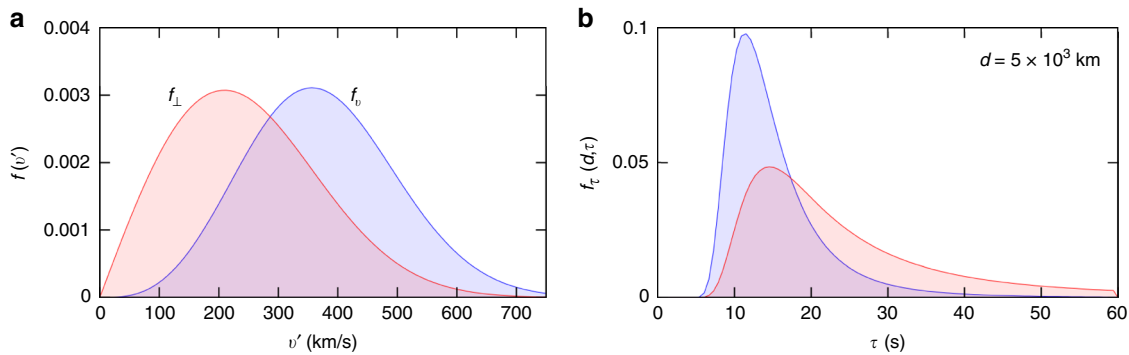


Fig. 7 Velocity and crossing time distributions. **a** The blue curve shows the velocity distribution for dark matter objects that cross the Global Positioning System constellation Eq. (16) while the red curve shows the corresponding distribution for the velocity component normal to the domain wall Eq. (17). **b** The resultant single-clock crossing-time, $\tau = d/v'$, distribution for walls of width $d = 5 \times 10^3$ km

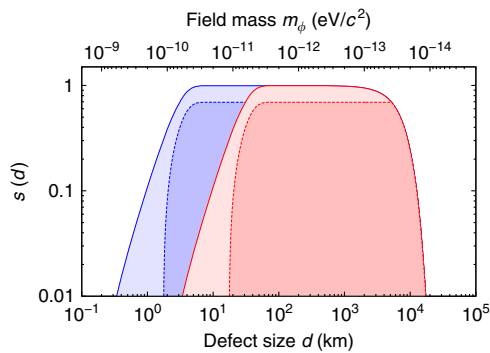


Fig. 8 Domain wall width sensitivity. Sensitivity, s , as a function of the wall width d . The blue region corresponds to the best case scenario (due to the servo-loop uncertainty), and the red region to the worst case, see Eq. (12). The darker regions correspond to a time window of size $J_w = 300$ s (i.e., $v_{\min} \approx 170$ km s^{-1}), and the lighter regions correspond to $J_w = 3000$ s ($v_{\min} \approx 17$ km s^{-1}). The upper horizontal axis shows the mass of the underlying dark matter field

of laboratory atomic clocks that are orders of magnitude more accurate than the GPS clocks⁴³.

Methods

Crossing duration distribution. Before placing limits on F_{eff} , we must account for the fact that we do not have equal sensitivity to each domain wall width, d , or equivalently crossing durations,

$$\tau \equiv \frac{d}{v_{\perp}}, \tag{9}$$

where v_{\perp} is the component of the velocity perpendicular to the face of the DM wall. This is due in part to aspects of the clock hardware and operation, the time-resolution (data sampling frequency), and the employed search method. Therefore, for a given d , we must determine the proportion of events that have crossing durations within the range τ_{\min} to τ_{\max} , where $\tau_{\min(\max)}$ is the minimum (maximum) crossing duration for which this method is sensitive.

There are two factors that determine τ_{\min} . The first is the servo-loop time—the fastest perturbation that can be recorded by the clock. This servo-loop time is manually adjusted by military operators and is not available to us at a given epoch, however, it is known^{46,47} to be within 0.01 and 0.1 s. As such, we consider the best and worst case scenarios:

$$\begin{aligned} \tau_{\min}^{\text{Servo}}(\text{best}) &= 0.01 \text{ s}, \\ \tau_{\min}^{\text{Servo}}(\text{worst}) &= 0.1 \text{ s}. \end{aligned} \tag{10}$$

Note, that below τ^{Servo} we still have sensitivity to DM events, however, the sensitivity in this region is determined by the response of the quartz oscillator to the temporary variation in fundamental constants. However, the resulting limits for crossing durations shorter than the servo-loop time are generally weaker than the

existing astrophysics limits (see Supplementary Note 5, including Supplementary Figs. 4–8), so we consider this no further.

The second condition that affects τ_{\min} is the clock degeneracy: the employed GPS data set has only 30 s resolution, so any clocks which are affected within 30 s of the reference clock will not exhibit any DM-induced frequency excursion in their data; see satellites 15 and 16 in Fig. 3a. For $<60\%$ of the clocks to experience the jump, the (thin-wall) DM object would have to be travelling at over 700 km s^{-1} , which is close to the galactic escape velocity (for head-on collisions), so the degeneracy does not affect the derived limits in a substantial way. (In fact, assuming the standard halo model, $<0.1\%$ of events are expected to have $v_{\perp} > 700$ km s^{-1} .) This velocity corresponds to a crossing duration for the entire network of ~ 70 s. Transforming this to crossing duration for a single clock, τ , amounts to multiplying by the ratio $d/(D_{\text{GPS}})$:

$$\tau_{\min}^{\text{Degen.}} = \frac{d}{D_{\text{GPS}}} 70 \text{ s}. \tag{11}$$

For the thickest walls we consider ($\sim 10^4$ km), this leads to $\tau_{\min}^{\text{Degen.}}$ of 14 s.

Combining the servo-loop and degeneracy considerations, we arrive at the expression

$$\begin{aligned} \tau_{\min}^{\text{best}} &= \max\left(0.01 \text{ s}, \frac{d}{D_{\text{GPS}}} 70 \text{ s}\right), \\ \tau_{\min}^{\text{worst}} &= \max\left(0.1 \text{ s}, \frac{d}{D_{\text{GPS}}} 70 \text{ s}\right). \end{aligned} \tag{12}$$

For walls thicker than $d \sim 100$ km, τ_{\min} is determined by the $d/(D_{\text{GPS}})70$ s term.

As to the maximum crossing duration, there are also two factors that affect τ_{\max} . First, the wall must pass each clock in less than the sampling interval of 30 s—this is the condition for the wall to be considered thin:

$$\tau_{\max}^{\text{thin}} = 30 \text{ s}. \tag{13}$$

If a wall takes longer than 30 s to pass by a clock, the simple single-data-point signals shown in Fig. 3 would become more complicated, and would require a more-detailed pattern-matching technique. Second, we only consider time windows, J_w , of a certain size in our analysis (see Supplementary Note 4). If a wall moves so slowly that it does not sweep all the clocks within this window, the event would be missed:

$$\tau_{\max}^{\text{window}} = J_w \frac{d}{D_{\text{GPS}}}. \tag{14}$$

Therefore, the overall expression for τ_{\max} is:

$$\tau_{\max} = \min\left(30 \text{ s}, J_w \frac{d}{D_{\text{GPS}}}\right). \tag{15}$$

Making J_w large, however, also tends to increase $S_{\text{thresh}}^{(1)}$ (since there is a higher chance that a large window will satisfy the condition for a potential event). By performing the analysis for multiple values for J_w , we can probe the largest portion of the parameter space; for further details see Supplementary Note 4 and Supplementary Tables 2 and 3. In this work, we consider windows of J_w up to 500 epochs (15,000 s), which corresponds to a minimum velocity of ~ 4 km s^{-1} , which is roughly the orbit speed of the satellites. This has a negligible effect on our sensitivity, since $<0.1\%$ of walls are expected to have $v_{\perp} < 4$ km s^{-1} .

Domain wall width sensitivity. Assuming the standard halo model, the relative scalar velocity distribution of DM objects that cross the GPS network is quasi-

Maxwellian

$$f_v(v) = \frac{Cv^2}{v_c^3} \left[\exp\left(\frac{-(v-v_c)^2}{v_c^2}\right) - \exp\left(\frac{-(v+v_c)^2}{v_c^2}\right) \right], \quad (16)$$

where $v_c = 220 \text{ km s}^{-1}$ is the Sun's velocity in the halo frame, and C is a normalisation constant. The form of Eq. (16) is a consequence of the motion of the reference frame. However, the distribution of interest for domain walls is the perpendicular velocity distribution for walls that cross the network

$$f_{\perp}(v_{\perp}) = C' \int_{v_{\perp}}^{\infty} f_v(v) \frac{v_{\perp}}{v^2} dv, \quad (17)$$

where v_{\perp} is the component of the wall's velocity that is perpendicular to the wall, and C' is a normalisation constant. Note that this is not the distribution of perpendicular velocities in the galaxy—instead, it is the distribution of perpendicular velocities that are expected to cross paths with the GPS constellation (walls with velocities close to parallel to face of the wall are less likely to encounter the GPS satellites, and objects with higher velocities more likely to).

Now, define a function $f_{\tau}(d, \tau)$, such that the integral $\int_{\tau_a}^{\tau_b} f_{\tau}(d, \tau) d\tau$ gives the fraction of events due to walls of width d that have crossing durations between τ_a and τ_b . Note, this function must have the following normalisation:

$$\int_0^{\infty} f_{\tau}(d, \tau) d\tau = 1$$

for all d , and is given by

$$f_{\tau}(d, \tau) = \frac{d}{\tau^2} f_{\perp}(v_{\perp}). \quad (18)$$

Plots of the velocity and crossing-time distributions are given in Fig. 7. Then, our sensitivity at a particular wall width is

$$s(d) = \int_{\tau_{\min}}^{\tau_{\max}} f_{\tau}(d, \tau) d\tau. \quad (19)$$

Plots of the sensitivity function for a few various cases of parameters are presented in Fig. 8.

Data availability. We used publicly available GPS timing and orbit data for the past 16 years from the Jet Propulsion Laboratory¹⁰.

Received: 4 April 2017 Accepted: 19 September 2017

Published online: 30 October 2017

References

- Bertone, G., Hooper, D. & Silk, J. Particle dark matter: evidence, candidates and constraints. *Phys. Rep.* **405**, 279–390 (2005).
- Liu, J., Chen, X. & Ji, X. Current status of direct dark matter detection experiments. *Nat. Phys.* **13**, 212–216 (2017).
- Rosenband, T. et al. Frequency ratio of Al^+ and Hg^+ single-ion optical clocks; metrology at the 17th decimal place. *Science* **319**, 1808–1812 (2008).
- Huntemann, N. et al. Improved limit on a temporal variation of m_p/m_e from comparisons of Yb^+ and Cs atomic clocks. *Phys. Rev. Lett.* **113**, 210802 (2014).
- Godun, R. M. et al. frequency ratio of two optical clock transitions in $^{171}\text{Yb}^+$ and constraints on the time variation of fundamental constants. *Phys. Rev. Lett.* **113**, 210801 (2014).
- Derevianko, A. & Pospelov, M. Hunting for topological dark matter with atomic clocks. *Nat. Phys.* **10**, 933–936 (2014).
- Aoyama, S., Tazai, R. & Ichiki, K. Upper limit on the amplitude of gravitational waves around 0.1 Hz from the global positioning system. *Phys. Rev. D* **89**, 067101 (2014).
- Blewitt, G. in *Treatise on Geophysics* (ed. Schubert, G.), 307–338 (Elsevier, 2015).
- Ray, J. & Senior, K. Geodetic techniques for time and frequency comparisons using GPS phase and code measurements. *Metrologia* **42**, 215–232 (2005).
- Murphy, D. et al. JPL Analysis Center Technical Report (in IGS Technical Report) **2015**, 77 (2015).
- Kibble, T. Some implications of a cosmological phase transition. *Phys. Rep.* **67**, 183–199 (1980).
- Vilenkin, A. Cosmic strings and domain walls. *Phys. Rep.* **121**, 263–315 (1985).
- Coleman, S. Q-balls. *Nucl. Phys. B* **262**, 263–283 (1985).

- Kusenko, A. & Steinhardt, P. J. Q-ball candidates for self-interacting dark matter. *Phys. Rev. Lett.* **87**, 141301 (2001).
- Lee, K., Stein-Schabes, J. A., Watkins, R. & Widrow, L. M. Gauged Q balls. *Phys. Rev. D* **39**, 1665–1673 (1989).
- Marsh, D. J. E. & Pop, A.-R. Axion dark matter, solitons and the cusp-core problem. *Mon. Not. R. Astron. Soc.* **451**, 2479–2492 (2015).
- Schive, H.-Y., Chiueh, T. & Broadhurst, T. Cosmic structure as the quantum interference of a coherent dark wave. *Nat. Phys.* **10**, 496–499 (2014).
- Hogan, C. & Rees, M. Axion miniclusters. *Phys. Lett. B* **205**, 228–230 (1988).
- Kolb, E. W. & Tkachev, I. I. Axion miniclusters and bose stars. *Phys. Rev. Lett.* **71**, 3051–3054 (1993).
- Bozek, B., Marsh, D. J. E., Silk, J. & Wyse, R. F. G. Galaxy UV-luminosity function and reionization constraints on axion dark matter. *Mon. Not. R. Astron. Soc.* **450**, 209–222 (2015).
- Arvanitaki, A. & Dubovsky, S. Exploring the string axiverse with precision black hole physics. *Phys. Rev. D* **83**, 044026 (2011).
- Arvanitaki, A. & Geraci, A. A. Resonant detection of axion mediated forces with nuclear magnetic resonance. *Phys. Rev. Lett.* **113**, 161801 (2014).
- Schneider, P., Ehlers, J. & Falco, E. E. *Gravitational Lenses* (Springer-Verlag, 1992).
- Vilenkin, A. & Shellard, E. *Cosmic Strings and Other Topological Defects* (Cambridge University Press, 1994).
- Cline, D. B. (ed.). *Sources and Detection of Dark Matter and Dark Energy in the Universe. Fourth International Symposium Held at Marina del Rey, CA, USA February 23–25, 2000* (Springer, 2001).
- The Planck Collaboration. Planck 2013 results. XXV. Searches for cosmic strings and other topological defects. *Astron. Astrophys.* **571**, A25 (2014).
- The BICEP2 Collaboration. Detection of B-Mode polarization at degree angular scales by BICEP2. *Phys. Rev. Lett.* **112**, 241101 (2014).
- Pospelov, M. et al. Detecting domain walls of axionlike models using terrestrial experiments. *Phys. Rev. Lett.* **110**, 021803 (2013).
- Pustelny, S. et al. The global network of optical magnetometers for exotic physics (GNOME): A novel scheme to search for physics beyond the standard model. *Ann. Phys.* **525**, 659–670 (2013).
- Hall, E. D. et al. Laser interferometers as dark matter detectors. Preprint at <http://arxiv.org/abs/> (2016).
- Stadnik, Y. V. & Flambaum, V. V. Searching for topological defect dark matter via nongravitational signatures. *Phys. Rev. Lett.* **113**, 151301 (2014).
- Kalaydzhyan, T. & Yu, N. Extracting dark matter signatures from atomic clock stability measurements. Preprint at <http://arxiv.org/abs/> (2017).
- Blumenthal, G. R., Faber, S. M., Primack, J. R. & Rees, M. J. Formation of galaxies and large-scale structure with cold dark matter. *Nature* **311**, 517–525 (1984).
- Bovy, J. & Tremaine, S. On the local dark matter density. *Astrophys. J.* **756**, 89 (2012).
- Freese, K., Lisanti, M. & Savage, C. Colloquium: annual modulation of dark matter. *Rev. Mod. Phys.* **85**, 1561 (2013).
- Meyer-Vernet, N. *Basics of the Solar Wind* (Cambridge University Press, 2007).
- Flambaum, V. V. & Dzuba, V. A. Search for variation of the fundamental constants in atomic, molecular, and nuclear spectra. *Can. J. Phys.* **87**, 25–33 (2009).
- Wcislo, P. et al. Experimental constraint on dark matter detection with optical atomic clocks. *Nat. Astron.* **1**, 0009 (2016).
- Olive, K. A. & Pospelov, M. Environmental dependence of masses and coupling constants. *Phys. Rev. D* **77**, 043524 (2008).
- Raffelt, G. G. Particle physics from stars. *Annu. Rev. Nucl. Part. Sci.* **49**, 163–216 (1999).
- Hirata, K. S. et al. Observation in the Kamiokande-II detector of the neutrino burst from supernova SN1987A. *Phys. Rev. D* **38**, 448–458 (1988).
- Barnes, J. A. et al. Characterization of frequency stability. *IEEE Trans. Instrum. Meas.* **20**, 105–120 (1971).
- Riehle, F. Optical clock networks. *Nat. Photonics* **11**, 25–31 (2017).
- Derevianko, A. Detecting dark matter waves with precision measurement tools. Preprint at <http://arxiv.org/abs/> (2016).
- Budker, D. & Derevianko, A. A data archive for storing precision measurements. *Phys. Today* **68**, 10–11 (2015).
- Griggs, E., Kursinski, E. R. & Akos, D. Short-term GNSS satellite clock stability. *Radio Sci.* **50**, 813–826 (2015).
- Dupuis, R. T., Lynch, T. J. & Vaccaro, J. R. in *2008 IEEE International Frequency Control Symposium*, 655–660 (2008).
- Wolfram Research, Inc., Mathematica, Version 11.2, Champaign, IL (2017).

Acknowledgements

We thank A. Sushkov and Y. Stadnik for discussions, and J. Weinstein for his comments on the manuscript. We acknowledge the International GNSS Service for the GPS data

acquisition. We used JPL's GIPSY software for the orbit reference frame conversion. This work was supported in part by the US National Science Foundation grant PHY-1506424.

Author contributions

B.M.R., G.B., M.P., J.S. and A.D. contributed to the concept and design of the work. B.M.R., C.D., M.M., A.R., W.W. and A.D. contributed to the data processing and analysis. The manuscript was mainly written by B.M.R., G.B. and A.D.

Additional information

Supplementary Information accompanies this paper at doi:[10.1038/s41467-017-01440-4](https://doi.org/10.1038/s41467-017-01440-4).

Competing interests: The authors declare no competing financial interests.

Reprints and permission information is available online at <http://npg.nature.com/reprintsandpermissions/>

Publisher's note: Springer Nature remains neutral with regard to jurisdictional claims in published maps and institutional affiliations.



Open Access This article is licensed under a Creative Commons Attribution 4.0 International License, which permits use, sharing, adaptation, distribution and reproduction in any medium or format, as long as you give appropriate credit to the original author(s) and the source, provide a link to the Creative Commons license, and indicate if changes were made. The images or other third party material in this article are included in the article's Creative Commons license, unless indicated otherwise in a credit line to the material. If material is not included in the article's Creative Commons license and your intended use is not permitted by statutory regulation or exceeds the permitted use, you will need to obtain permission directly from the copyright holder. To view a copy of this license, visit <http://creativecommons.org/licenses/by/4.0/>.

© The Author(s) 2017